

PLAN OF SUBDIVISION OF LOT 13,  
DISTRICT LOT 137, ODYD, PLAN 8890.

PLAN EPP134974

BCGS 82E.083  
SCALE 1:300 METRIC



The intended plot size of this plan is 432mm in width by 580mm in height (C-size) when plotted at a scale of 1:300 METRIC.

LEGEND

- ⊕ Denotes Control Monument Found
- Denotes Standard Iron Post Found
- Denotes Standard Iron Post Set
- WI Denotes Witness

This plan shows one or more witness posts which are not set on the true corner(s).

Distances shown are horizontal, ground-level distances, in metres and decimals thereof.

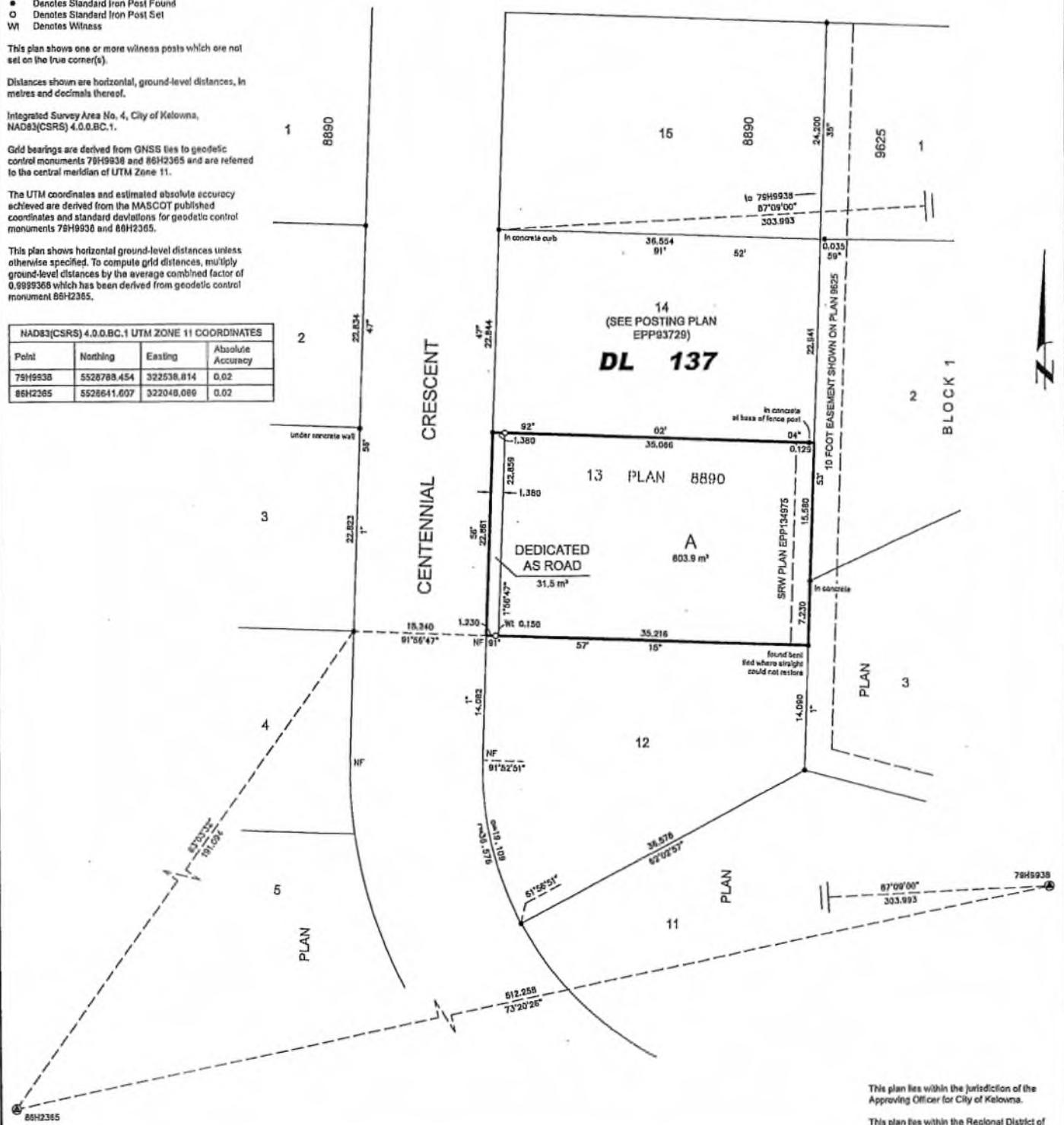
Integrated Survey Area No. 4, City of Kelowna,  
NAD83(CSRS) 4.0.0.BC.1.

Grid bearings are derived from GNSS ties to geodetic control monuments 79H9938 and 86H2365 and are referred to the central meridian of UTM Zone 11.

The UTM coordinates and estimated absolute accuracy achieved are derived from the MASCOT published coordinates and standard deviations for geodetic control monuments 79H9938 and 86H2365.

This plan shows horizontal ground-level distances unless otherwise specified. To compute grid distances, multiply ground-level distances by the average combined factor of 0.9999365 which has been derived from geodetic control monument 86H2365.

NAD83(CSRS) 4.0.0.BC.1 UTM ZONE 11 COORDINATES			
Point	Northing	Easting	Absolute Accuracy
79H9938	5528788.454	322538.814	0.02
86H2365	5528641.007	322048.089	0.02



**AllTerra**  
Land Surveying Ltd.  
www.AllTerraSurvey.ca  
Ph: 250.782.0123 Fax: 322.685.00

This plan lies within the jurisdiction of the Approving Officer for City of Kelowna.  
This plan lies within the Regional District of Central Okanagan.  
The field survey represented by this plan was completed on the 8th day of January, 2024.  
Simone Porcellato, BCLG #981